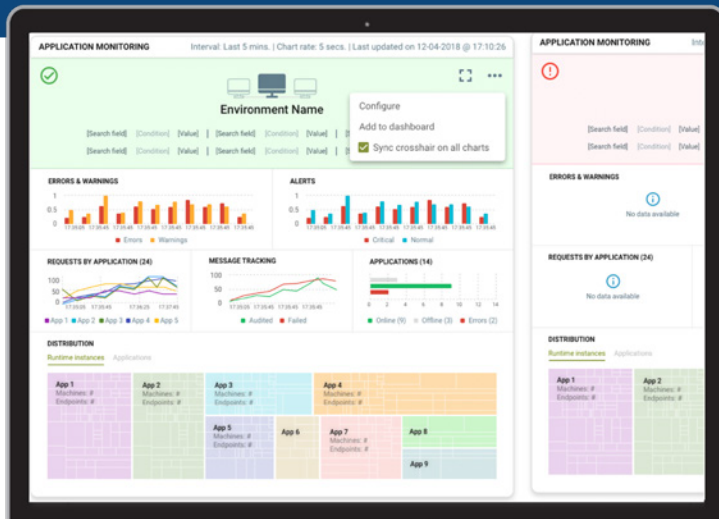




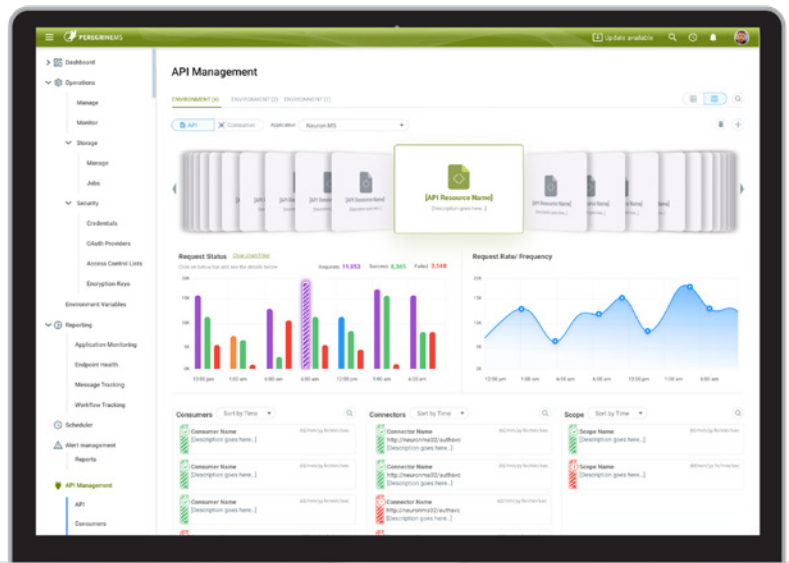
Modernize your Monitoring and Managing of Apps & Integrations

Peregrine Connect's Management Suite provides businesses the ability to manage and monitor resources in their environments. It provides in-depth application analytics and reporting to quickly identify root causes of any issues to correct them instantly.

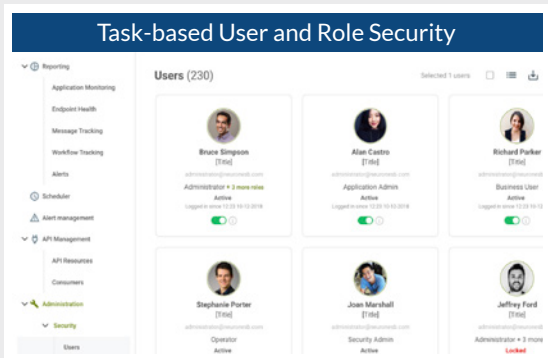


The Management Suite is for enterprises of all sizes who want to monitor & manage all applications, APIs, and integrations in one place. The Management Suite supports all ecosystems from complex to simple and works with diverse integration requirements. It integrates with any deployments that are on-premise, hybrid, and in the cloud. The Management Suite provides a world-class, comprehensive web-based portal that allows organizations to securely manage and monitor all Neuron ESB deployment environments and resources.

Management Suite is sophisticated daily management and monitoring software for deployed Neuron ESB solutions. The Management Suite can manage API resources to create and secure them to fit your organization's needs. It supports scheduling business processes while providing real-time alerting that can be operationalized, subscribed to along with monitoring all applications deployed. Management Suite capabilities include creating customizable dashboards for swift and easy access to any feature while giving in-depth historical and current data insights.



Management Suite Features:



Task-based User and Role Security

Peregrine Connect Management Suite is focused on modern-day security, extending the same model to Peregrine Connect Design Studio. They are allowing organizations to achieve fine-grained access control and security for operations and monitoring. Offering an extra layer of protection with OpenID and OAuth 2.0 features when creating Users and Roles based to ensure accurate access to operations within the business. Therefore, safeguarding only authorized users to log into the Management Suite Portal. The Users and Roles function allows administrator-assigned users to manage the options for all users who have access to the portal or are currently using the portal.



Environment Management and Monitoring

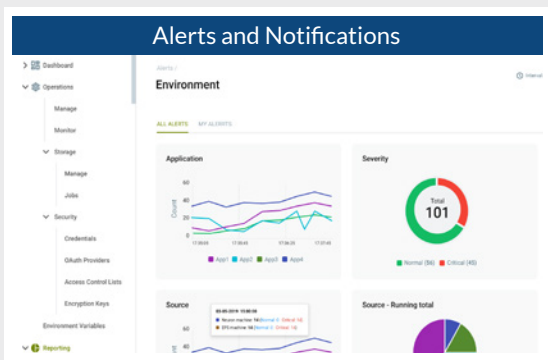
Environment management and monitoring views provide a leading interface for creating, managing, and monitoring integration environments.

The environment view is used to maintain the general integration health of the machines and runtimes deployed, while the monitoring view is used to monitor the health and activity.



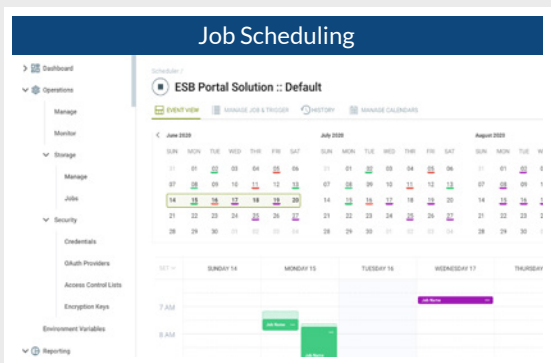
Application Monitoring and Reporting

Application monitoring and reporting are for organizations focused on application health and performance of applications deployed within an environment. The application view displays connectors, services, and workflows. At the same time, the operational view gives you the runtimes and computer resources deployed to run the applications. Peregrine Connect united these two separate views to interoperate. As a result, users are granted access to reporting and monitoring applications, endpoint health, message tracking, and alerts.



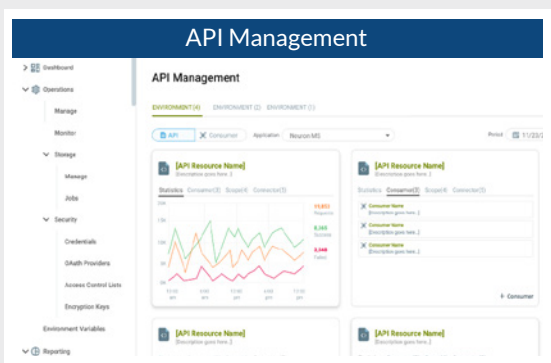
Alerting and Notifications

Along with API Management, the Management Suite provides organizations with proactive alerting capabilities by identifying applications and machines exceeding their thresholds. This assists in the operational health of the integration environment resources and the applications deployed to them. By using alerting, organizations can create and subscribe to SMS and Email notifications based on the critical parameters to their business.



Job Scheduling

The job scheduler feature schedules and executes business processes within the Management Suite. Users can easily pass job data to a scheduled process to persist data between scheduled executions. Organizations can easily schedule batch processing to keep critical applications in sync during off-hours or kick off critical tasks at the right time using the Job Scheduler.



API Management

API Management capability allows users to create API resources from Neuron ESB-hosted services. It secures and extends services to external vendors and partners using industry-standard protocols like OpenID Connect and OAuth. API management also provides tracking and reporting on usage and performance.

